

**ALLETT MOWERS LIMITED
BADEN POWELL ROAD
KIRKTON INDUSTRIAL
ESTATE
ARBROATH. SCOTLAND
DD11 3LS
TEL: 01241 437740
FAX: 01241 431715**

BUFFALO 34"

INTRODUCTION

Before operating the mower read this handbook carefully, ensuring that you know all the controls and how to stop the engine quickly in an emergency. Your ALLETT motor mower has been designed and built to the highest possible standards and will give long and satisfactory service providing the following instructions are carried out. If they are ignored costly repairs could result which are not covered by the Guarantee.

The Guarantee is to protect the owner against faulty material and workmanship during manufacture and not from the effects of wear and damage caused after purchase. Such damage can be unnecessarily accelerated by incorrect or inadequate maintenance. It is in the interest of the owner of the ALLETT motor mower to see that the instructions contained in this manual are carried out carefully.

The following items come under normal care and maintenance and are not covered by Guarantee:

- Cleaning and adjusting the carburettor
- Cleaning the fuel system
- Cleaning spark plugs
- Adjusting cutters
- Adjusting belts and chains

Breakdowns due to:

- Incorrect maintenance
- Incorrect adjustments
- Neglect and misuse
- Accidental damage

The terms left-hand and right-hand refer to the machine when viewed from the operating position.

Please ensure your new machine warranty registration card has been correctly completed and signed.

Having retained your section, return the registration card to:

Allett Mowers Limited, Baden Powell Road, Kirkton Industrial Estate, Arbroath,
Angus DD11 3LS.

Always use the Model and Serial numbers recorded when ordering spare parts.

Model

Serial No.


PREPARING FOR USE

OIL :

With the machine level fill the engine sump with SAE30 oil. Check the oil level with the dipstick provided. Ensure that no oil is spilt onto the rear roller as this will damage the rubber covering. Apply few a drops of light oil to the throttle cable and all other controls. Further information on the engine is provided in the manufacture's handbook.

FUEL -

Fill the tank with UNLEADED petrol. The engine is a four stroke unit and
NO OIL SHOULD BE PUT IN THE FUEL TANK.


 **WARNING** IMPORTANT :- PETROL IS HIGHLY FLAMMABLE.

Add fuel before starting the engine. Avoid spilling petrol, this can damage the rubber covering in the rear roller. Do not fill the petrol tank whilst the engine is running or whilst you are smoking. If petrol is spilled do not attempt to start the engine. Move the machine away from the area of spillage and avoid creating any source of ignition until petrol vapours have dissipated. Store fuel in a cool place in a container specifically designed for the purpose.

CUTTING UNIT :

The cutting cylinder must always be adjusted to make light contact with the bottom blade. Too heavy a contact will cause premature wear and excessive load on the engine and transmission, check adjustments before the machine is started.

If necessary readjust the cutting cylinder following the instructions given on page 8.

 **WARNING** Cutters are sharp! Mind your fingers.

USE OF CONTROLS



WARNING The engine should not be started until you have read this section.

ENGINE SPEED CONTROL :

This is located on the right of the handlebar. The operation of this control increases or decreases the speed of the engine. Your ALLETT mower has been designed to operate on minimum revs. in an attempt to reduce noise, and vibration and also to give the mower a long, and hopefully trouble free life. Set the engine revs. to give a comfortable walking speed, you will find the cutter speed is then also correct. Full throttle is not needed.

IGNITION SWITCHES :

There is one switch on the front of the engine, ensure this is turned on before attempting to start the engine. It is not necessary to use this engine switch during normal operations. The main Ignition switch is mounted in the centre of the handlebar, again ensure the switch is in the on position before starting, and to stop the engine, switch off. **THIS IS WHERE TO SWITCH OFF IN AN EMERGENCY.**

CUTTER CLUTCH :

The cutter clutch control lever is mounted in the front of the handlebar.
To engage the cutter drive pull the lever up to the handlebar and hold it there.
To disengage the cutters release the lever.

DRIVE CLUTCH :

The drive clutch control lever is mounted behind the handlebar.
To engage the roller drive pull the lever up to the handlebar and hold it there.
To disengage the drive release the lever.

FUEL CONTROLS :

The petrol tap is situated under the tank, ensure it is turned on before starting.
The choke control is situated on top of the carburettor, to start the engine when it is cold, close the choke fully. Once started, move the choke control to the centre, after allowing a few minutes to warm up, open the choke control completely. Never run engine with the choke closed after it is warm.

SAFETY PRECAUTIONS



WARNING

To ensure the safety of both operator and bystanders it is important that the following instructions are adhered to:

- 1) Read the operators instruction book carefully.
Know your controls.
Learn how to stop the machine quickly in an emergency.
- 2) Make sure that the area to be cut is free from sticks, stones and any other foreign bodies.
- 3) Visually inspect the machine before use to see that the cylinder and bottom blade are not damaged.
- 4) Be sure that the machine is in a safe operating condition. Use only parts made and guaranteed by the manufacturer.
- 5) Ensure that the guards provided are always in use when operating the machine.
- 6) Do not operate the engine in a confined space where exhaust fumes (Carbon monoxide) can collect.
- 7) Stop the engine whenever you leave the machine, refuel or make any kind of adjustments.
- 8) Disengage the drive to the cutting cylinder before driving across any surface other than grass.
- 9) Do not allow children or people unfamiliar with these instructions to operate the mower at any time.
- 10) If the cutters have been damaged, have the damage repaired and the cutters reground by a competent engineer.
- 11) Routine maintenance to be carried out by a competent person.

STARTING THE ENGINE

Before starting the engine check the following:-

- 1) That the engine oil is up to the prescribed level on the dipstick..
- 2) That there is sufficient fuel in the petrol tank and the tap is turned on.
- 3) That both the ignition switch on the engine and the one on the handles are turned on.

Now start the engine as follows:-

Set the throttle control lever, in the centre of the handlebar, to about the half throttle position.

Close the choke fully if the engine is cold and pull the recoil starter.

Once the engine has started, move the choke control to the centre, after allowing a few minutes to warm up, open the choke control completely.

Never run the engine with the choke closed after it has warmed up.

USING THE MOWER

After checking the cutting height, cutting cylinder adjustment and the fuel and oil levels.

Start the engine as described on page 6.

It's worth remembering at this point that your ALLETT mower was designed to run on minimum revs. Do not use full throttle.

Allow a few moments for the engine to warm up then, with the throttle set a little above tick-over, pull the drive clutch lever, which is mounted behind the handle, up to the handlebar, and hold it there.

The mower will travel forward immediately, so start walking as you engage the clutch.

Now set the throttle to give the desired walking speed.

To disengage the drive simply release the lever.

To engage the cutters pull the lever back to the handlebar, and hold it there.

To disengage the cutters release the lever.

The cutters may be either engaged or disengaged at any time whether the mower is moving or not.

NOTE:

In the event of striking a solid object with the cutters, disengage the clutches and stop the engine and inspect for damage. Any damaged parts should be repaired or replaced before proceeding.



WARNING

THE CUTTERS CONTINUE TO REVOLVE FOR A FEW MOMENTS AFTER THE CUTTER CLUTCH HAS BEEN DISENGAGED.

ADJUSTMENTS

Before working on the mower or carrying out any adjustments, STOP THE ENGINE.

⚠ WARNING TAKE CARE NOT TO TRAP YOUR FINGERS IN THE BLADES.

CUTTER ADJUSTMENTS:

Rotate the cutting cylinder slowly by hand checking that each blade lightly touches the bottom blade along its full length. This can be checked by cutting paper along the length of the blade. If necessary, to compensate for wear and tear on the cutters, the bottom blade can be adjusted by the two adjuster screws on the inside of the side plates above the cylinder, by turning the adjuster ANTI-CLOCKWISE to bring the blades closer together, and CLOCKWISE to take them further apart.

⚠ WARNING Do not adjust the cutters to tightly together. This does no good at all and causes excess noise and undue wear to the blades.

HEIGHT ADJUSTMENT :

Slacken the two nuts holding the height adjuster brackets (item 35 page 14) to the side plates, move the brackets up and down as required and re-tighten the nuts.

CHAIN ADJUSTMENT :

Remove the chain case and check that both chains have approximately 9mm of movement at right angles to their travel on the slack side. If adjustment is necessary to both chains adjust the lower or secondary chain first, by slackening the locking nut (item 7 page 16) at the back of the compound sprocket (item 11 page 16), then turning the nut on the front of the compound sprocket, which moves the sprocket up and down on an eccentric. Having achieved the desired setting re-tighten the locking nut at the back with one spanner whilst holding the adjusting nut at the front in place with another. The top or primary chain is adjusted by a nylon tensioner mounted on a slotted bracket, slacken the clamping bolt, adjust and re-tighten.

BELT ADJUSTMENT :

There are two adjusters on each cable. A fine adjuster mid-way along the cable, screw the adjuster out to tighten the belt, when this adjustment is used up, screw it back in and take up the slack on the coarse adjuster at the lower end of the cable. The transmission tunnel has to be removed to achieve this. Ensure that the belt is the correct tension when the clutch is engaged and that the belt is clear of all the belt guides. Also check that the belt is clear of the top pulley when the clutch is disengaged.

⚠ WARNING Do not over tension the belts, tight enough and no more.

SERVICE SCHEDULE

DAILY: When in regular use or every 10 hours.

1. Check cutters and adjust if necessary.
2. Check engine for oil and top up if necessary.
3. Shake dust from air filter.

WEEKLY: When in regular use or every 50 hours.

1. Check belt and chain adjustment and ensure chains are properly lubricated. Spray chains with lubricant or paint with gear oil.
2. Lubricate all controls with engine oil.

MONTHLY : When in regular use or every 200 hours.

1. Check all screws for tightness.
2. Remove engine cowling and remove dirt and grass from fins, then replace cowling. This is important otherwise the engine will overheat and cause damage.
3. Renew air filter.

ENGINE :

For all engine maintenance and checks please refer to the engine manual.

CLEANING AND STORAGE

It must be remembered that grass cutting is a dirty job, and regular cleaning will extend the life of your machine.

Keeping the air filter free of grass and dust is most important. A pre-cleaner is fitted to help in this direction, if you remove the rubbish from the pre-cleaner regularly the air filter element will have a much better chance of doing its job properly. Even so the element needs to be changed on a regular basis, the engine manufacturer's hand book will give more details.

The cooling fins of the engine must also be high on the agenda. If grass clippings are allowed to accumulate in this area the engine will overheat, causing expensive problems with pistons and valves in particular. A short engine life will be the result. To clean the cooling fins remove the engine cowling and use a hose pipe to flush out the fins all around and on top of the engine.

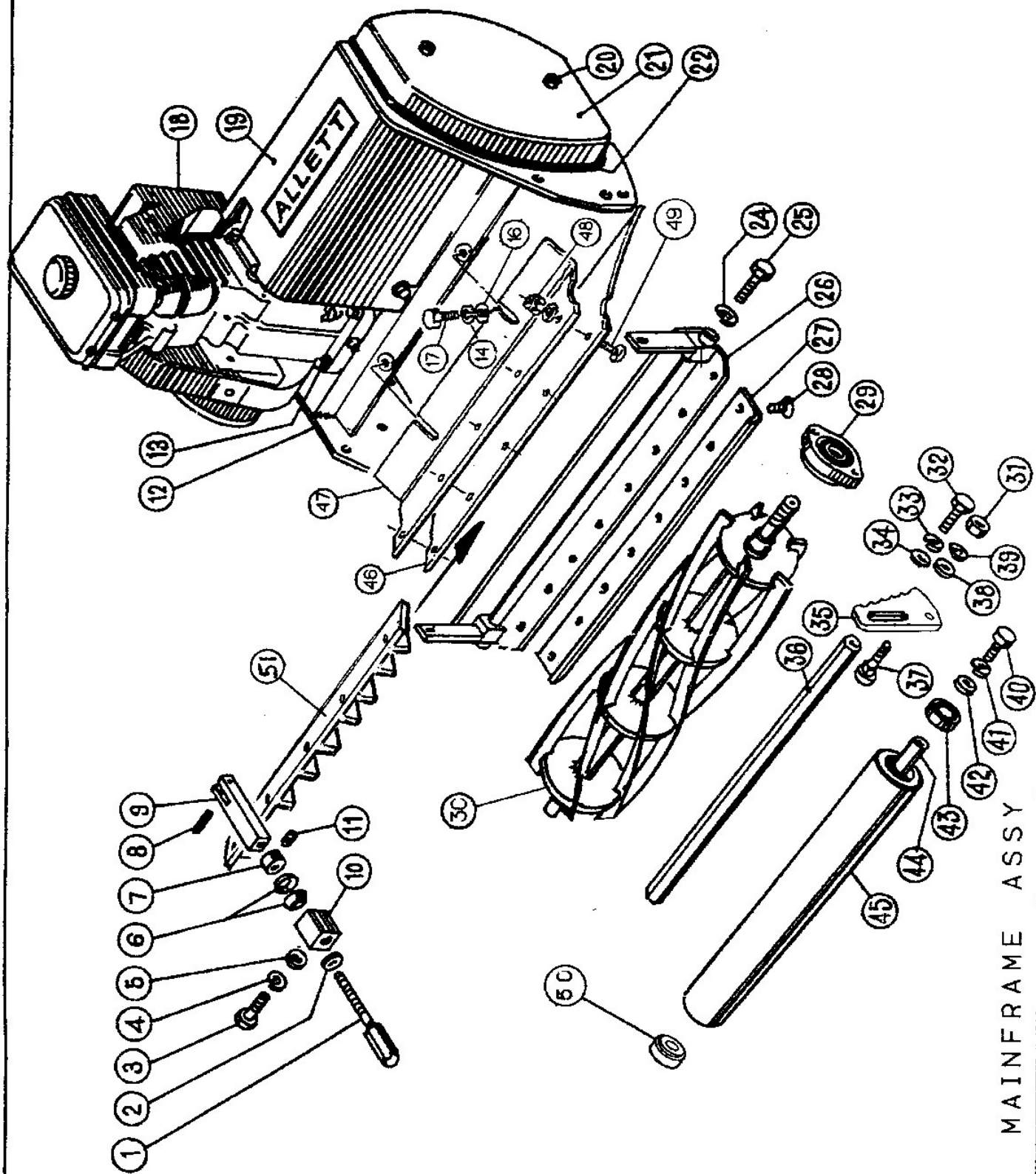
Whilst the hose is out, wash off the rest of the mower. Then dry it with a cloth and lubricate all adjusting threads, pivot points, cables and the edges of the cutting cylinder with an Oil Can. This will make every thing so much easier when the mower is next used.

When storing the machine for the winter leave the engine on compression. This will prevent the valves sticking in the spring. to achieve this gently pull the recoil starter until you feel the resistance of the compression stroke. Periodically during the winter start the engine and allow to run for a few minutes, after stopping the engine put it back on the compression stroke . If these recommendations are carried out you should have little or no trouble in the spring.

**THE FOLLOWING PAGES
ARE DEVOTED TO:**

**SPARE PARTS NUMBERS
AND
EXPLODED DIAGRAMS**

**PLEASE REFER TO PART NUMBERS
WHEN ORDERING REPLACEMENT PARTS
FROM OUR SPARES DEPARTMENT**



MAINFRAME ASSY

BUFFALO 34 MAINFRAME ASSEMBLY

Item No	Description	Part No
Complete	Cutter Adjuster Assembly	AB024
1	Cutter Adjuster Screw	AB1001
2	M10 Plain Washer	WM10
3	3/8" x 3/4" UNF Set Screw	S11011
4	M10 Spring Washer	SWM10
5	M10 Plain Washer	WM10
6	3/8" Belleville Washer	W11030
7	Cutter Adjuster Locking Collar	AB1003
8	10mm Roll Pin	AM89341
9	Cutter Adjuster Fork	AB1004
10	Cutter Adjuster Anchor Block	AB1002
11	M6 Grub Screw	S11055
12	Chassis	AB062
13	M8 x 35 Bolt	SM835
14	M6 Spring Washer	SWM6
15	M6 X 20 Set Screw	SM620
16	M6 Plain Washer	WM6
17	M6 X 20 Set Screw	SM620
18	Engine	GH170
19	Tunnel Guard	AB1046
20	M8 Nyloc Nut	NM8
21	Chain Case	AB003
22	Chain Case Beading	AM90302
24	M10 Spring Washer	SWM10
25	M10 X 25 Set Screw	SM1025
Complete	Bottom Blade Carrier & Adjuster Assembly	AB061
26	Bottom Blade Carrier	AB060
27	Bottom Blade	AB1062
28	Bottom Blade Screw	S11032
29	25mm Cylinder Bearing	AM81009
30	Cylinder	AB052
31	M8 Nyloc Nut	NM8
32	M8 X 25 Set Screw	SM825
33	M8 Spring Washer	SWM8
34	M8 Plain Washer	WM8
35	Height Adjuster Bracket	AB1072
36	Bracing Bar	AB1041
37	Adjuster Bolt	BCM825
38	M8 Plain Washer	WM8
39	M8 Spring Washer	SWM8
40	M10 X 25 Set Screw	SM1025
41	M10 Spring Washer	SWM10
42	M10 Plain Washer	WM10
Complete	Front Roller & Adjuster Assembly	AB064
43	20mm Sealed Bearing	AM81089
44	Front Roller Shaft	AB1040
45	Front Roller	AB1042
46	Delivery Plate	AB1043
47	Delivery Plate Bracket	AB1044
48	M6 Nyloc Nut	NNM6
49	M6 X 16 Mushroom Head Screw	S11060
50	Locking Collar	BG003
51	Deflector Strip	BSG091

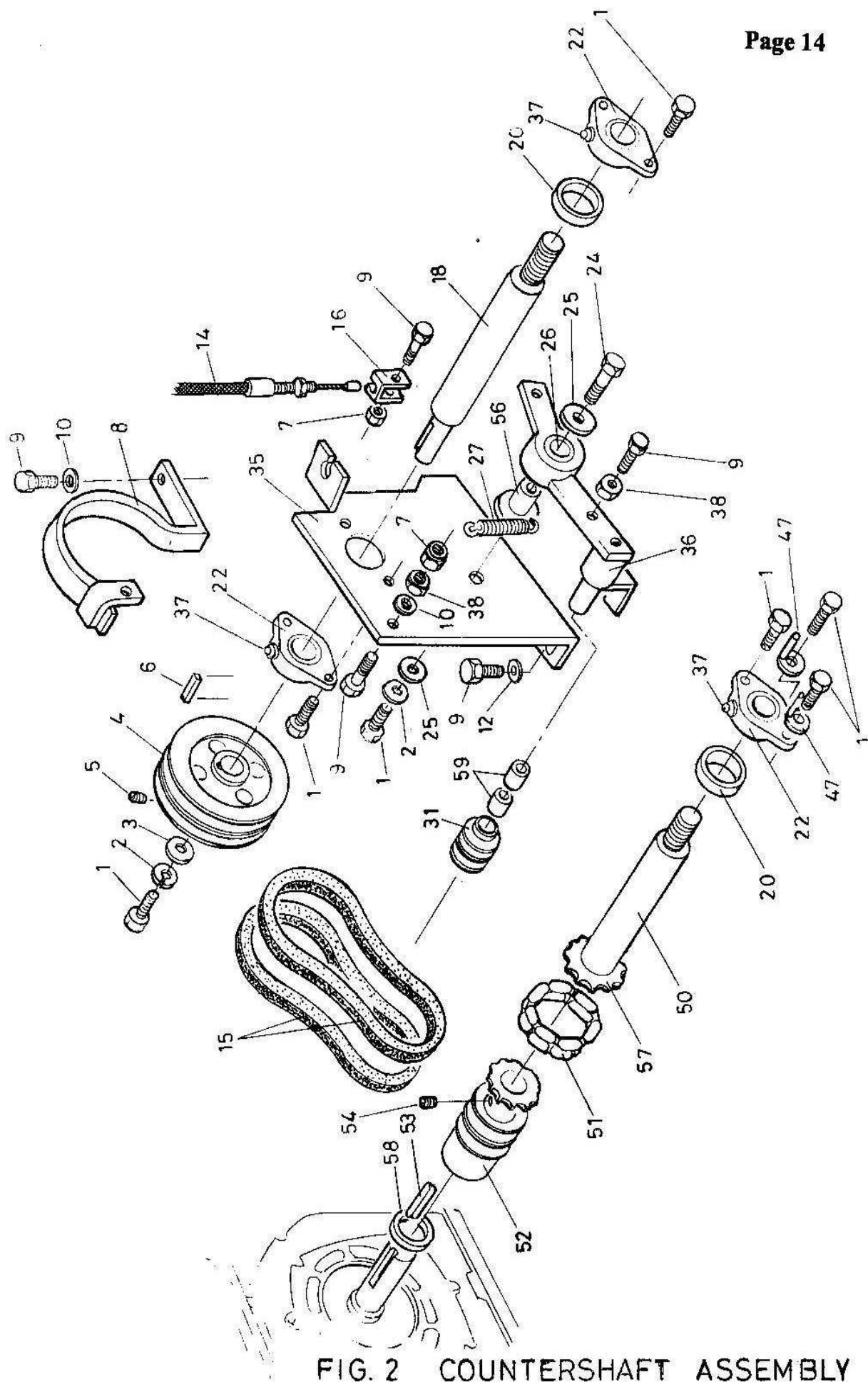
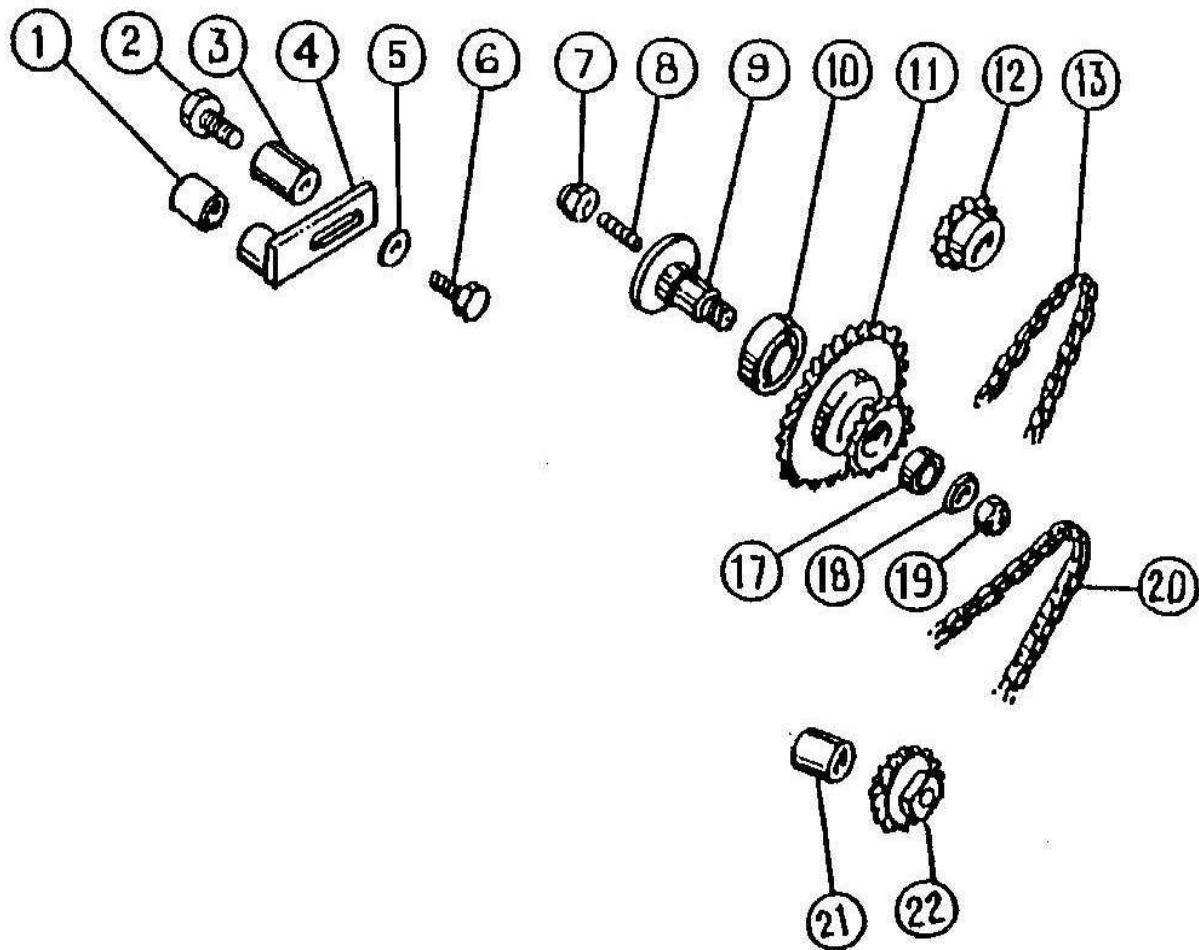


FIG. 2 COUNTERSHAFT ASSEMBLY

FIG 2

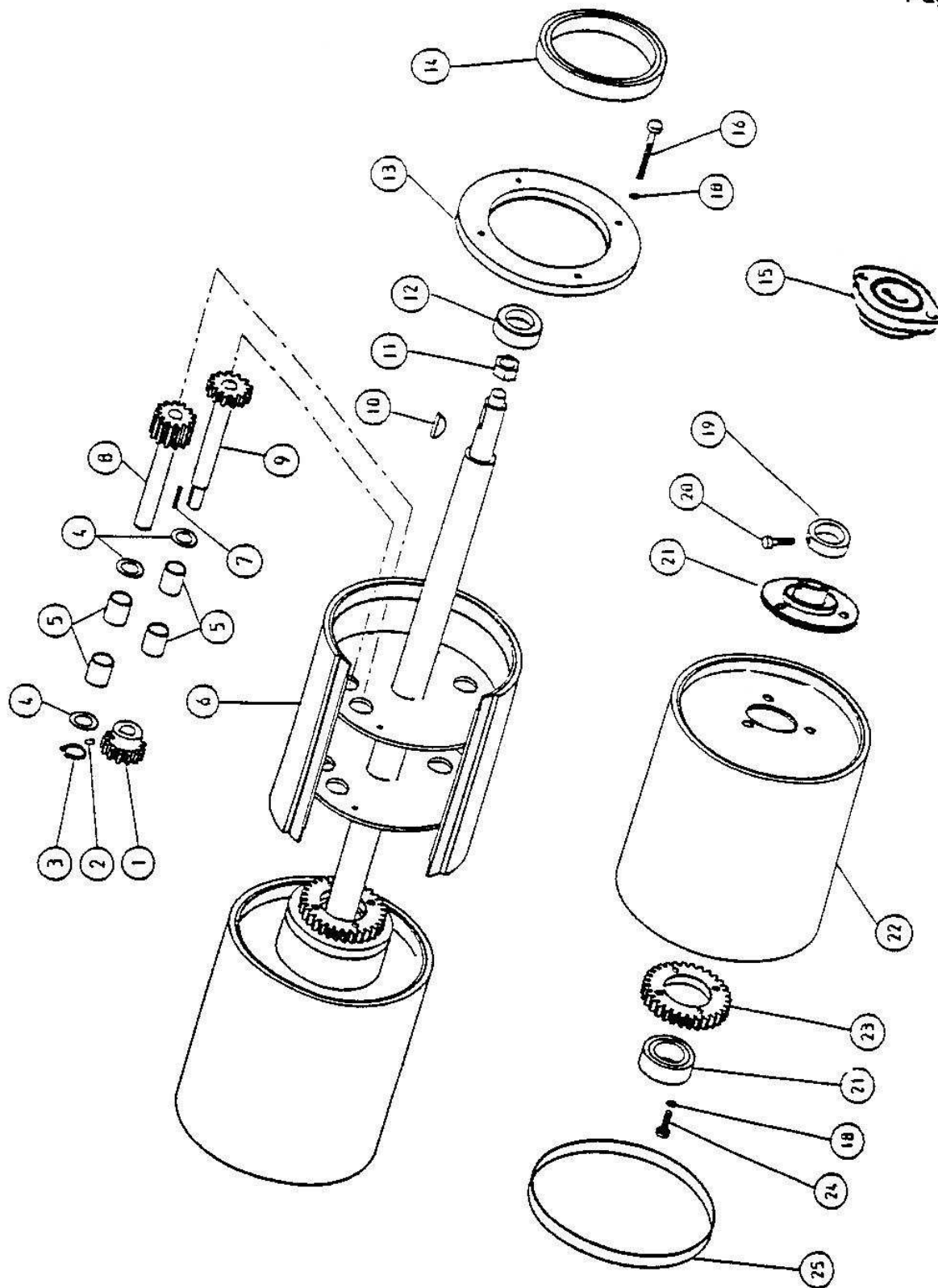
ITEM NO	DESCRIPTION	PART NO
1	3/8" x 1" UNF SETSCREW	S11014
2	M10 SPRING WASHER	SWM10
3	M10 PLAIN WASHER	WM10G
4	PULLEY DRIVE	AM81413
5	M8 GRUB SCREW	ACGM8
6	KEY 1/4 SQ X 26MM	AM81055
7	M6 NYLOC NUT	NNM6
8	BELT GUIDE	BSG004
9	M6 X 20MM SETSCREW	SM620
10	M6 PLAIN WASHER	WM6
12	M6G PLAIN WASHER	WM6G
14	CLUTCH CABLE	AM89320/1
15	DRIVE BELT SPZ612 (2OFF)	AM89482
16	CABLE YOKE	BSG1024
18	SHAFT ROLLER DRIVE	AB1038
20	LOCKING COLLAR	AM81000
22	FLANGE UNIT 20MM	AM81008
25	M10 PLAIN WASHER	M10C
26	3/4" BRONZE BUSH	AM82654
27	SPRING	AM88343
31	DRIVE CLUTCH JOCKEY	BSG098
35	SHAFT RETAINING PLATE	BSG003
36	DRIVE CLUTCH ARM	BSG064
37	GREASE NIPPLE 1/4" UNF	AM84022
38	M6 NUT	NM6
47	TOP BELT GUIDE	AB029
50	CYLINDER DRIVE SHAFT	AB1037
51	COUPLING CHAIN	AM89475
52	FLYWHEEL	AM81412
53	KEY CRANKSHAFT	AM89483
54	GRUB SCREW 1/4" UNF	AM82701
56	DRIVE CLUTCH ARM SWIVEL	BSG017
57	COUPLING SPROCKET	BSG1052
58	ENGINE DISTANCE PIECE	SG1001
59	NEEDLE ROLLER BEARING	AM81002



ROLLER DRIVE ASSY.

BUFFALO 34 REAR ROLLER DRIVE ASSY.

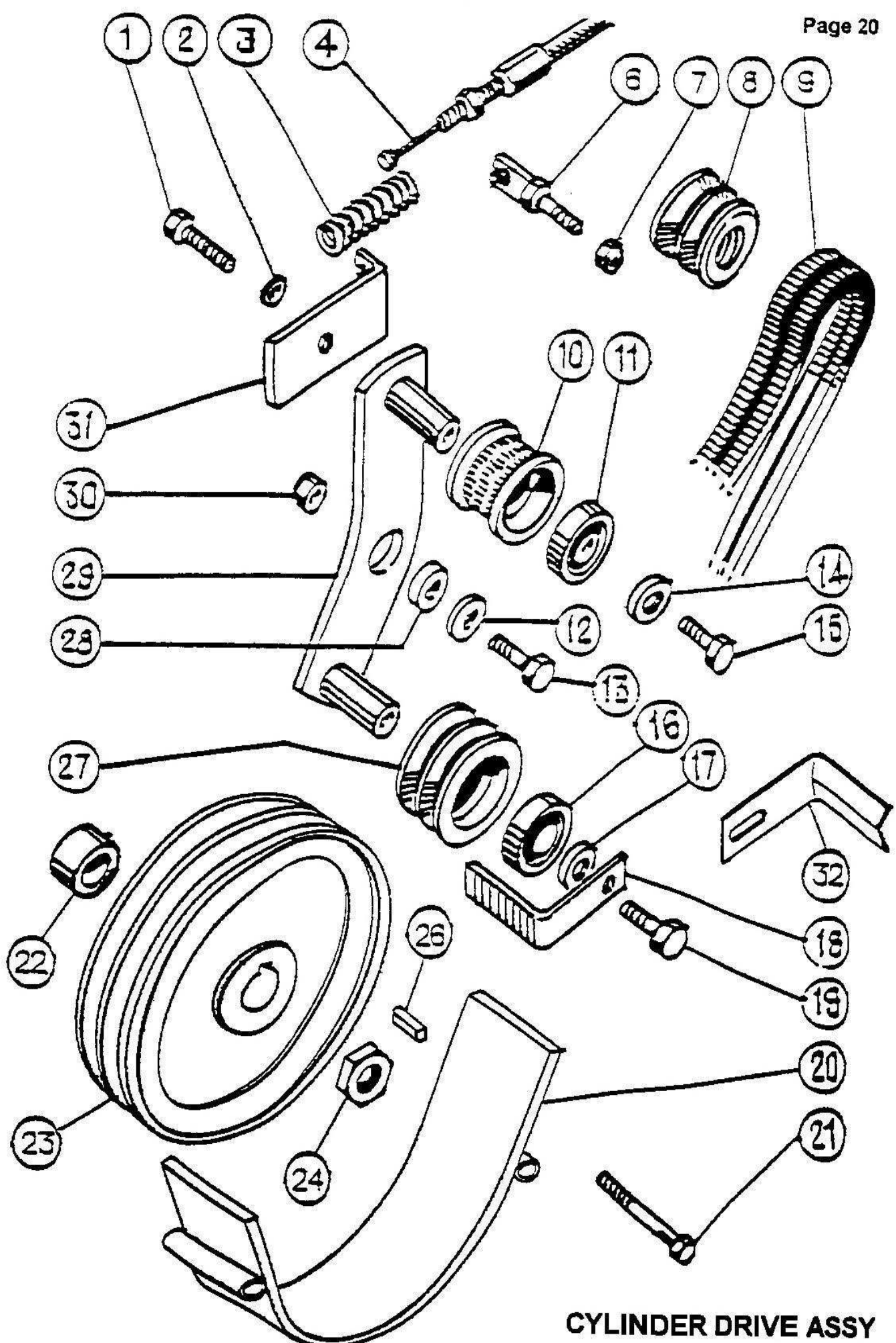
Item No	Description	Part No
Complete	Chain Tensioner Assembly	BSG034
1	Nylon bush	AM89424
2	3/4" x 3/4" Set Screw	S11011
3	Chain Tensioner Boss	BSG1043
4	Chain Tensioner	BSG043
5	10mm Plain Washer	WM10
6	3/8" x 3/4" Set Screw	S11011
Complete	Compound Sprocket Assembly	BSG033
7	3/8" UNF Nyloc Nut	N11002
9	Compound Eccentric	BSG008
10	20mm Bearing	AM81007
11	Compound Sprocket	BSG025
12	Primary Drive Sprocket	BSG022
13	Primary Drive Chain	AM89421
17	9mm Bearing	AM90513
18	8mm Plain Washer	WM8
19	5/16" UNF Nyloc Nut	N11003
20	Secondary Drive Chain	AM89436
21	Distance Piece	BSG1044
22	Back Roller Sprocket	BG008



REAR ROLLER ASSEMBLY

BUFFALO 34 REAR ROLLER ASSY

Item No	Description	Part No
Complete	Rear Roller Assembly	AB059
1	Planet Pinion	AB1053
2	M5 Grub Screw	ACGM45
3	Circlip	AM81126
4	Spacer	AB1051
5	3/4" Bronze Bush	AM82654
6	Centre Section & Shaft	AB054
7	Parallel Key	AM81125
8	Double Diff Shaft & Gear	AB055
9	Single Diff Shaft & Gear	AB056
12	Inner Roller Collar	AB1057
13	Oil Seal Housing	AB1065
14	Oil Seal	AM811124
15	20mm Flange Unit	AM81008
16	M8 x 80 Bolt	BM880
18	8mm Spring Washer	SWM8
19	Outer Roller Collar	BSG016
20	Locking Collar Screw	BSG1047
21	25mm Bearing	AM81049
22	Outer Roller Section	AB058
23	Ring Gear	AB1056
24	M6 X 45 Set Screw	SM645
25	Sealing Band	AB1066

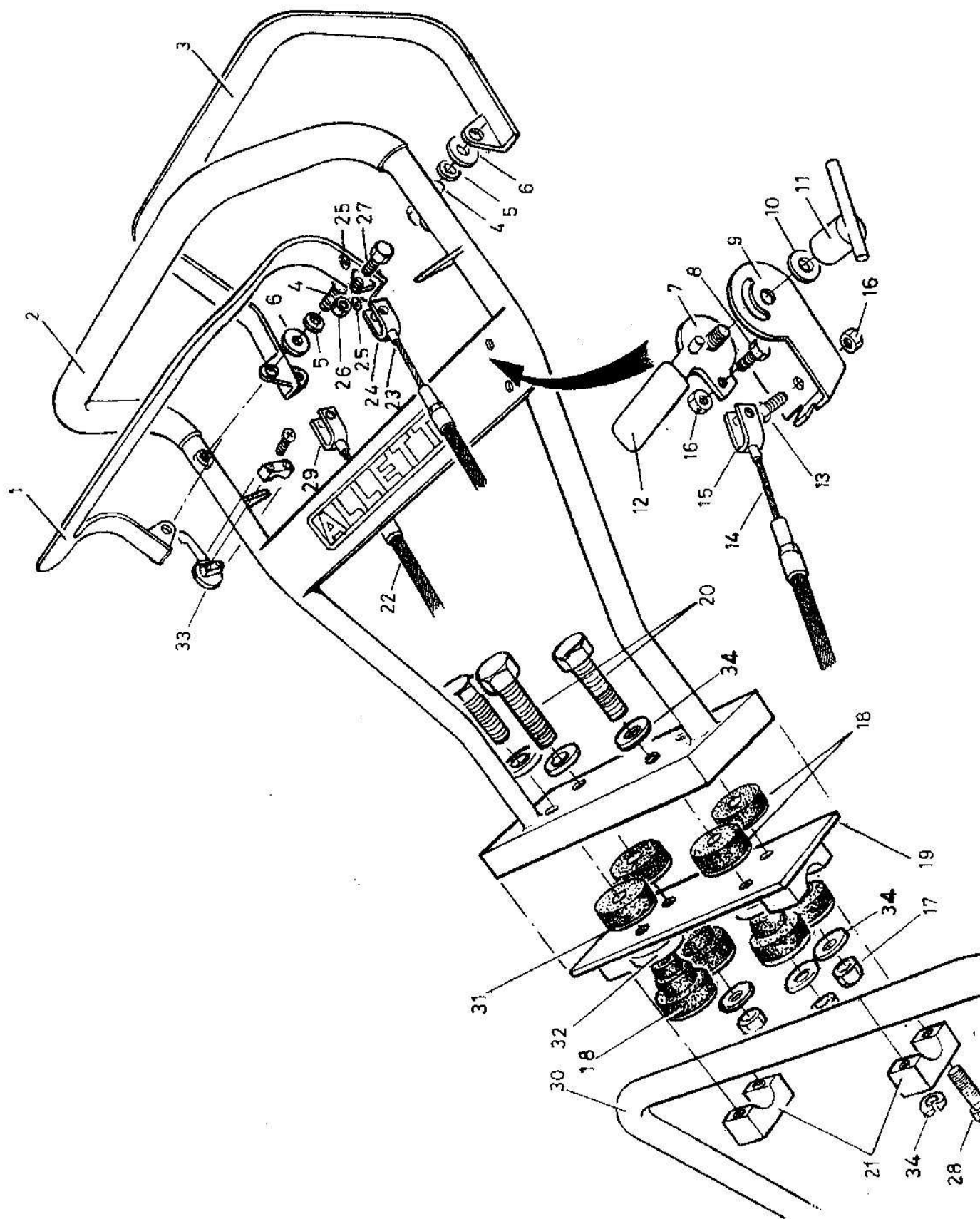


CYLINDER DRIVE ASSY

BUFFALO 34 CYLINDER DRIVE ASSEMBLY

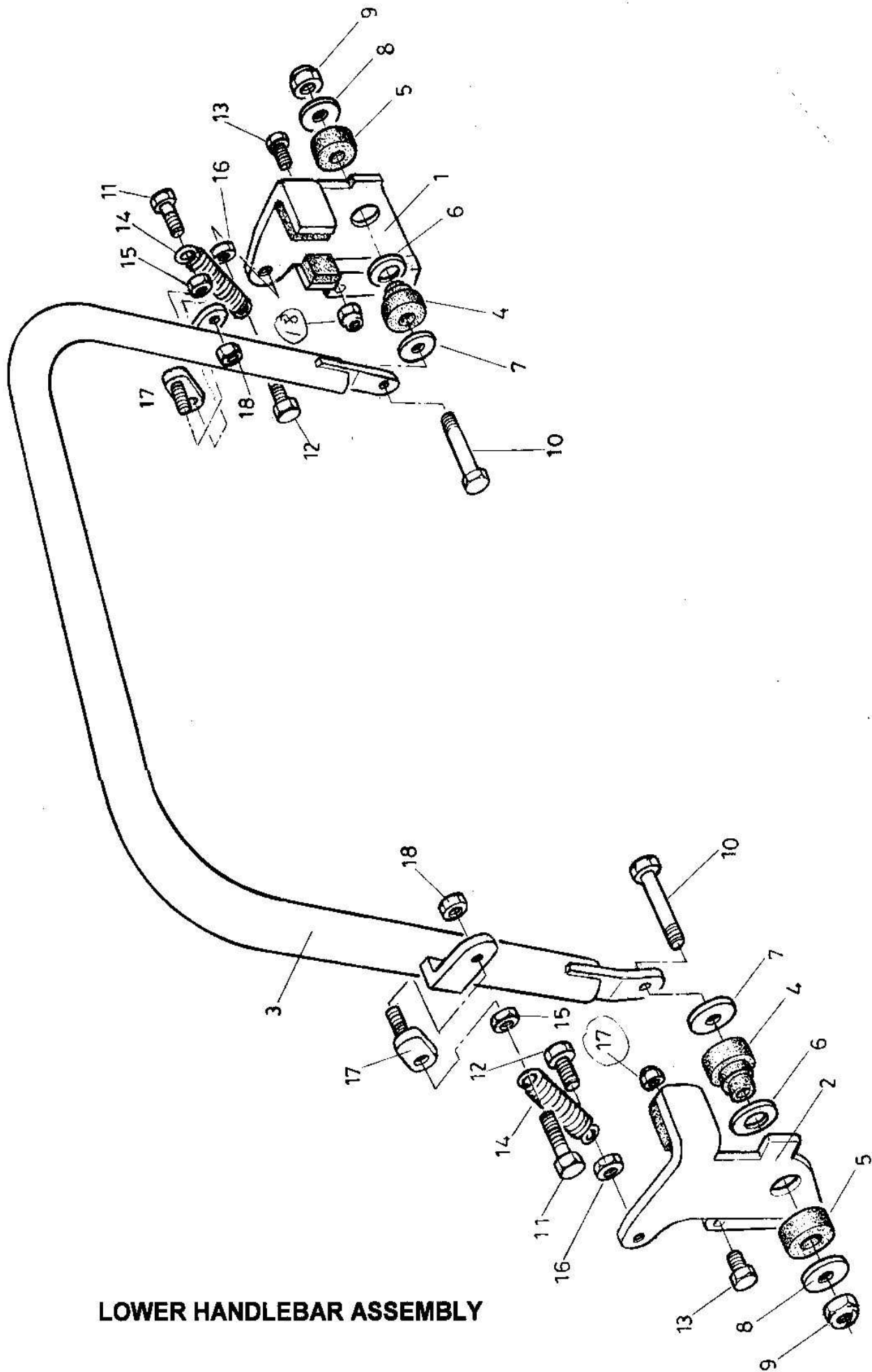
Item No	Description	Part No
1	M6 X 45 Set Screw	SM645
2	M6 Plain Washer	WM6
3	Spring	AM90519
4	Cutter Clutch Cable	BSG1077
6	Cable Holder	BSG012
7	M6 Nyloc Nut	NNM6
8	Pulley, Cutter Primary Drive	AM94027
9	Cutter Belt	AM91451
Complete	Cutter Clutch Clutch Arm Assembly	BG005
10	Upper Belt Tensioner Wheel	BG1021
11	Bearing	AM82104
12	M10 Plain Washer	WM10C
13	M10 x 25 Set Screw	SM1025
14	M6 Plain Washer	WM6
15	M6 X 20mm Set Screw	SM620
16	Bearing	AM82104
17	M6 Plain Washer	WM6
18	Belt Guide	BG1016
19	M6 x 20 Set Screw	SM620
20	Lower Belt Guide	AB009
21	M6 X 65mm bolt	BM665
22	Distance Piece	AB1006
23	Cylinder Pulley	AM92406/27
24	3/4" BSF Half Nut	N11013
26	Key 1/4" x 21mm	AM81011
27	Pulley, Belt Tensioner	BG1022
28	Clutch Arm Pivot	BSG1041
29	Belt Tensioner Arm	BG015
30	M10 Nyloc Nut	NNM10
31	Cable Retaining Plate	AB008
32	Middle Belt Guide	AB1000

Please note that although the drawings show twin pulleys, all 34" Buffalos are fitted with triple pulleys.



BUFFALO UPPER HANDLE ASSY

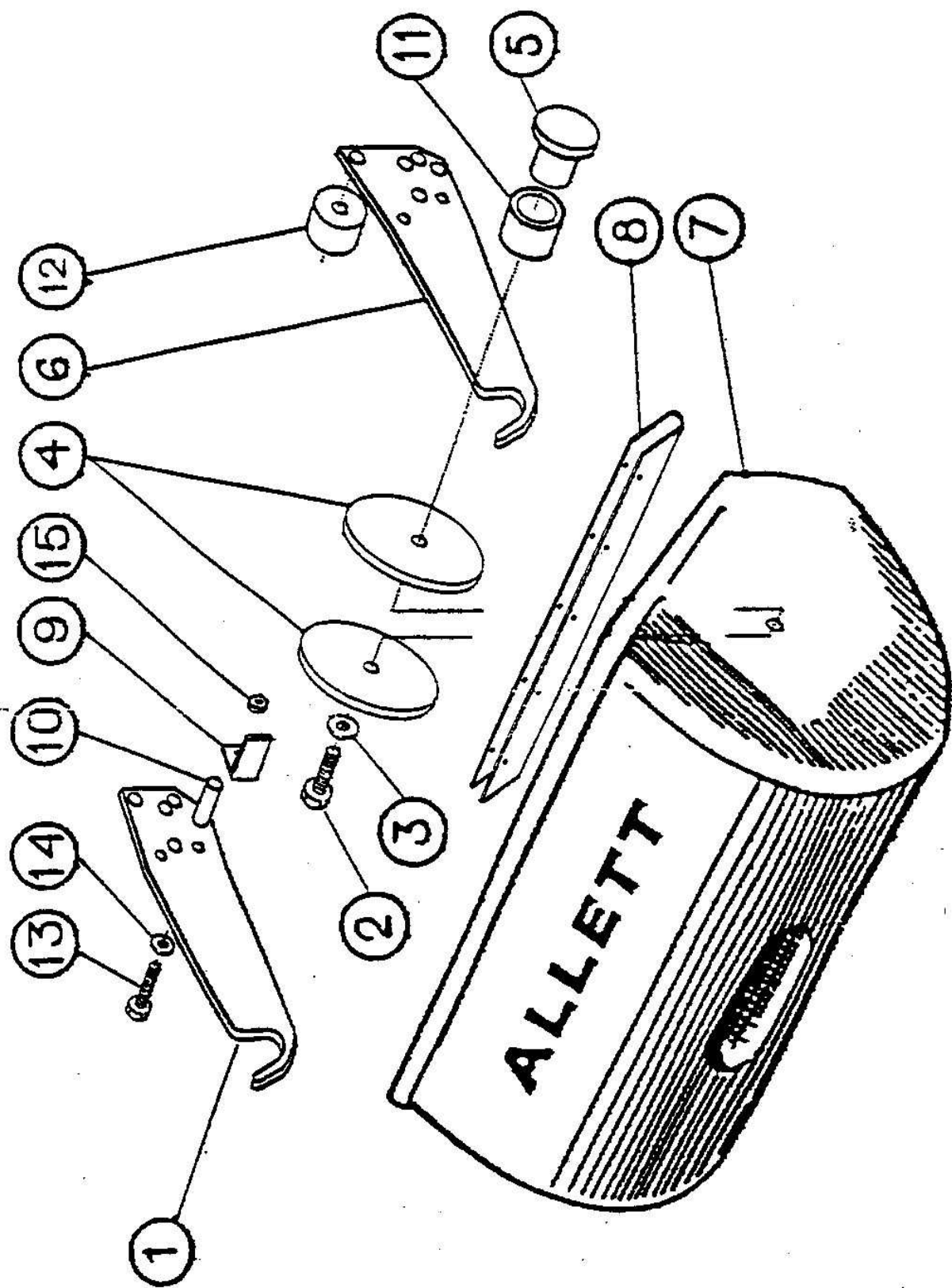
ITEM NO	DESCRIPTION	PART NO
1	CUTTER CLUTCH LEVER (FRONT)	BSG038
2	TOP HANDLE	BSG093
3	ROLLER DRIVE LEVER (BACK)	BSG039
4	SCREW	SM616
5	SPRING WASHER	SWM6
6	LEVER MOUNTING	BSG1081
7	BRAKE LEVER	BSG045
8	SCREW	SM625
9	LEVER BASE PLATE	BSG1089
10	WASHER	WM6G
11	SCREW LOCK BODY	BSG046
12	HANDLE GRIP	AM81140
13	SETSCREW	SM620
14	BRAKE CABLE	BSG108
15	YOKE	BSG1024
16	LOCK NUT	NNM6
17	NUTS	N11002
18	ANTI VIB MOUNT	AM81320
19	LOWER HANDLE VIBRO PLATE	BSG094
20	BOLT	B11009
21	TOP HANDLE BRACKET	BSG1020B
22	ROLLER DRIVE CABLE	BSG1078
23	CUTTER CLUTCH CABLE	BSG1077
24	YOKE	BSG1024
25	WASHER NYLON 15.88MM	AM81093
26	NUT	NNM6
27	SCREW	SM620
28	BOLT	B11001
29	YOKE	BSG1024
30	LOWER HANDLE	SEE PAGE 23
31	WASHER	WM10G
32	SPACER FOR A/V	BSG1207
33	THROTTLE CONTROL	AM82177
34	WASHER	SWM8



LOWER HANDLEBAR ASSEMBLY

BUFFALO 34" LOWER HANDLEBAR ASSEMBLY

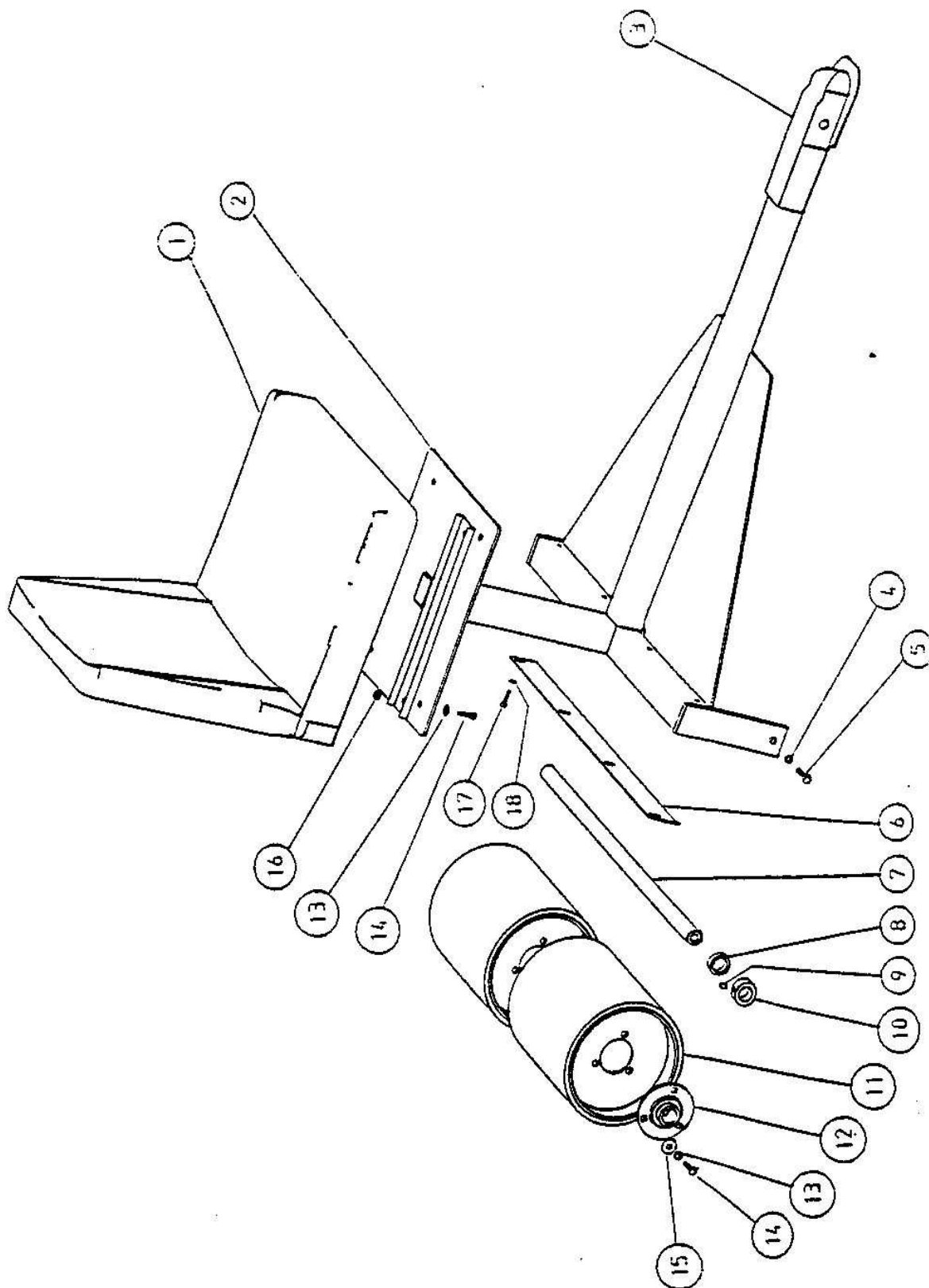
ITEM NO	DESCRIPTION	PART NO
1	Pivot Bracket R/H	BSG106
2	Pivot Bracket L/H	BSG105
3	Lower Handlebar	AB063
4	Universal Mount (Part)	AM81320
5	Universal Mount (Part)	AM81320
6	Spacer	AFK1132
7	Washer	AC4246
8	Washer M10G	WM10G
9	Nut Nyloc M10	NNM10
10	Bolt M10 x 55	BM1055
11	Screw M8 x 16	SM816
12	Screw M10 x 20	SM1020
13	Screw 3/8" UNF x 1/4"	S11028
14	Spring	RT-00003098
15	Nut M8	NM8
16	Nut M10	NM10
17	Adjustable Spring Anchor	BSG109
18	Nut Nyloc 3/8" UNF	N11002



GRASSBOX & SUPPORT ASSY

BUFFALO 34 GRASSBOX & SUPPORT ASSEMBLY

Item No	Description	Part No
Complete	Grassbox Assembly	AB067
1	Grassbox Arm L/H	BSG010
2	M10 x 20 Set Screw	SM1020
3	M10 Spring Washer	SWM10
4	Support Plates	BSG1029
5	Grassbox Swivel	BSG013
6	Grassbox Arm R/H	BSG1068
7	Grassbox	AB1067
8	Grassbox Stiffener	AB1045
9	Grassbox Arm Bracket	BSG1018
10	Grassbox Arm Stop	AB1027
11	Nylon Bush	BSG1050
12	Grassbox Spacer	BSG1053
13	M8 Set Screw	SM830
14	M8 Plain Washer	WM8
15	M8 Nyloc Nut	NNM8
16	Allett Logo 15"	AM81031

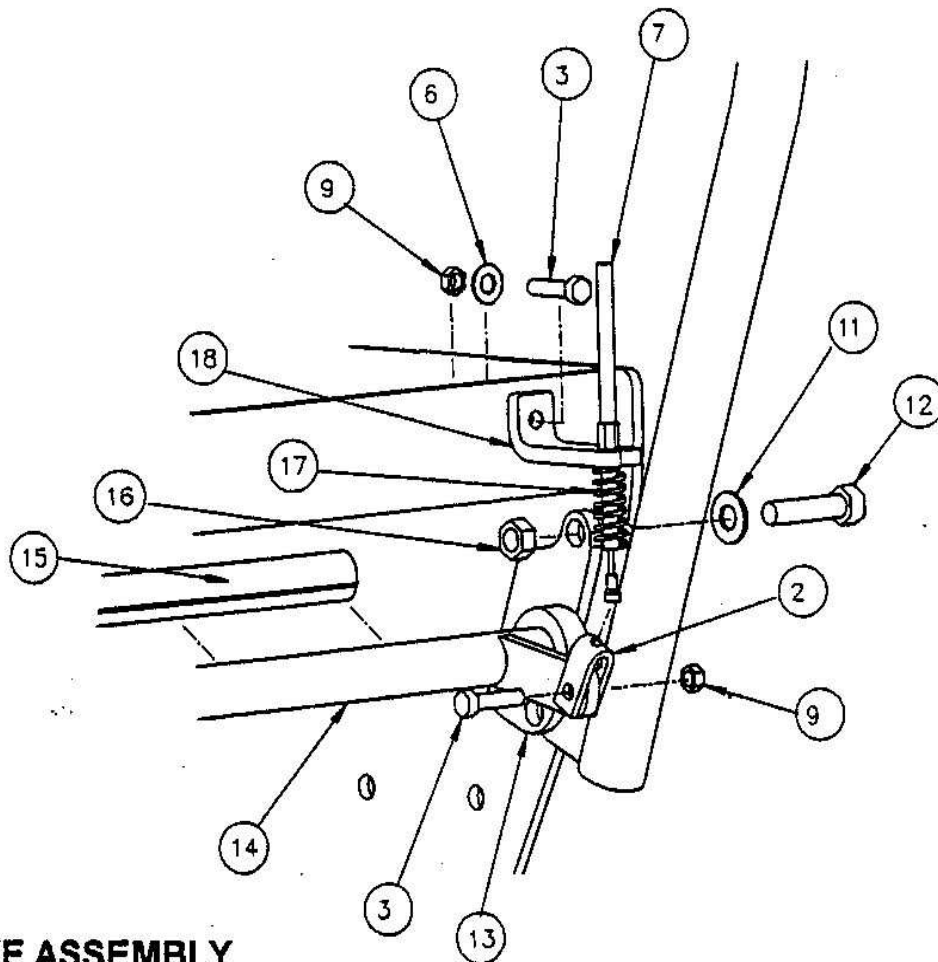
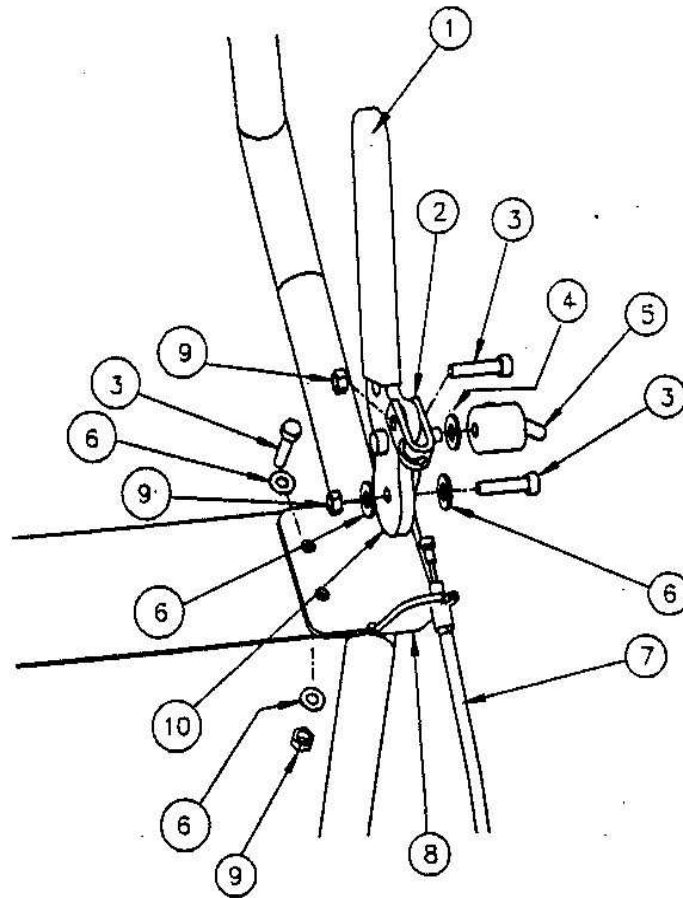


TRAILED SEAT ASSEMBLY

BUFFALO 34 TRAILING SEAT

Item No	Description	Part No
1	Upholstered Seat C/W Runners	AM82312
2	Trailed Seat Fabrication	AFK096
3*	Trailed Seat Coupling	TS252
4	1/2" Spring Washer	W11019
5	1/2"UNF x 1" Set Screw	S11018
6	Rear Roller Scraper	AG1016
7	Trailed Seat Shaft	AFK1203
8	Spacer	AFK1218
9	Locking Collar Screw	BSG1047
10	Rear Roller Lock Collar	BSG016
11	Trailed Seat Roller Section	AFK023
12	25mm Bearing	AM81049
13	M8 Spring Washer	SWM8
14	M8 x 20 Set Screw	SM820
15	M8 Plain Washer	WM8
16	M8 Nyloc Nut	NNM8
17	M6 x 25 Set Screw	SM625
18	M6 Spring Washer	SWM6
Complete	Trailed Seat Assembly	TS100

Note 3* Trailed Seat Coupling TS252 is welded to the frame. To replace, grind away weld and remove old coupling. Then re-weld new coupling into position



BRAKE ASSEMBLY

BUFFALO 34 BRAKE ASSEMBLY

Item No	Description	Part No
1	Handle Grip	AM81140
2	Yoke	BSG1024
3	M6 x 20 Set Screw	SM620
4	M6 Washer	WM6G
5	Screwlock	BSG1046
6	M6 Washer	WM6A
7	Brake Cable	BSG1088
8	Lever Baseplate	BSG1089
9	M6 Nyloc Nut	NNM6
10	Lever	BSG045
11	Washer	WM10A
12	3/8 x 1" UNF Set Screw	S11014
13	Brake Mount L/H	BS101
	Brake Mount R/H	BS102
14	Brake Rod Fabrication	AB069
15	Plastic Cover (Shaver & Tournament only)	90341
16	3/8 UNF Binx Nut	N49-3
17	Spring	AM90519
18	Lower Cable Retainer	BS1002